



**ZEBRA**

# Z-Ultimate 3000T

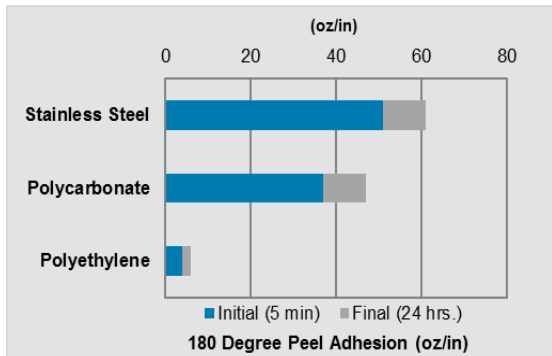
## FEATURES

- Thermal transfer, gloss polyester label with a high-performance permanent acrylic adhesive
- Unparalleled smear/scratch resistance
- Excellent durability and chemical resistance
- Available in white (05612RM) and silver (05272RM)

## MATERIAL CONSTRUCTION

Component	Description	Caliper
Facestock	White or silver coated polyester	2.0 mil
Adhesive	Permanent, acrylic-based	0.8 mil
Liner	50 lb. semi-bleached, kraft stock	3.0 mil
<b>TOTAL ± 10%</b>		<b>5.8 mil</b>

## ADHESIVE STRENGTH



## TEMPERATURE PERFORMANCE

Minimum Application Temperature	Service Temperature	Optimal Storage Conditions
50° F (10° C)	-40° F to 302° F (-40° C to 150° C)	72° F (22° C) at 50% RH

**Expected Exterior Life**  
3 years

## CHEMICAL RESISTANCE

	Chemical	Suggested Ribbon		
		6200	5095	5100
Weak	Blood	●	●	●
	Body Fluid	●	●	●
	Salt Water	●	●	●
	Water	●	●	●
	Window Cleaner	●	●	●
Moderate	Alcohol	●	●	●
	Ammonia	●	●	●
	Bleach	●	●	●
	IPA	●	●	●
Harsh	Gasoline	●	●	●
	Grease	●	●	●
	Oil	●	●	●
Extreme	Acetone	NR	NR	NR
	IR Reflow	NR	NR	NR
	MEK	NR	NR	NR
	TCE	NR	NR	NR
	Xylene	NR	NR	NR

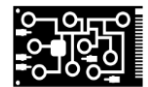
● Recommended ● Test in Your Application NR Not Recommended

## SUGGESTED APPLICATIONS

- UL/CSA/cUL compliance product labeling



- Top-side PCB labeling



- Product identification



- Automotive labeling



All products should be pre-tested to ensure it meets all intended requirements of specific end-use applications.

For more information, visit [www.zebra.com/supplies](http://www.zebra.com/supplies)

Product Performance and Suitability: The information contained in this document is to be used for guidance only and is not intended for use in setting specifications. All purchasers of





# Z-Ultimate 3000T

## UL/CSA ACCEPTANCES

Z-Ultimate 3000T White and Silver with 5095 and 5100 ribbons is UL-approved and CSA-accepted for indoor/outdoor use.

## FACESTOCK TENSILE STRENGTH

- Machine direction: 18,000 psi
- Transverse direction: 22,000 psi

All products should be pre-tested to ensure it meets all intended requirements of specific end-use applications.

For more information, visit [www.zebra.com/supplies](http://www.zebra.com/supplies)

Product Performance and Suitability: The information contained in this document is to be used for guidance only and is not intended for use in setting specifications. All purchases of

