



**ZEBRA**

# Z-Xtreme 4000T

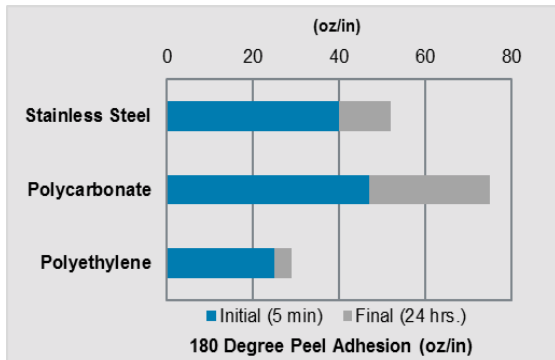
## FEATURES

- Thermal transfer, matte polyester label with a high-performance permanent acrylic adhesive
- Good smear/scratch resistance
- Excellent durability and chemical resistance
- Topcoating is suitable for fanfolding
- Available in white (05381RM) and silver (05385RM)

## MATERIAL CONSTRUCTION

| Component          | Description                            | Caliper        |
|--------------------|--|----------------|
| Facestock          | White or silver matte coated polyester | 2.0 mil        |
| Adhesive           | Permanent, acrylic-based               | 1.0 mil        |
| Liner              | 50 lb. semi-bleached, kraft stock      | 3.0 mil        |
| <b>TOTAL ± 10%</b> |  | <b>6.0 mil</b> |

## ADHESIVE STRENGTH



## TEMPERATURE PERFORMANCE

| Minimum Application Temperature | Service Temperature                    | Optimal Storage Conditions |
|---------------------------------|--|----------------------------|
| 50° F (10° C)                   | -40° F to 300° F<br>(-40° C to 149° C) | 72° F (22° C)<br>at 50% RH |

### Expected Exterior Life

3 years

## CHEMICAL RESISTANCE

|          | Chemical       | Suggested Ribbons |      |      |
|----------|----------------|-------------------|------|------|
|          |                | 6100              | 3200 | 6200 |
| Weak     | Blood          | ●                 | ●    | ●    |
|          | Body Fluid     | ●                 | ●    | ●    |
|          | Salt Water     | ●                 | ●    | ●    |
|          | Water          | ●                 | ●    | ●    |
|          | Window Cleaner | ●                 | ●    | ●    |
| Moderate | Alcohol        | ●                 | ●    | ●    |
|          | Ammonia        | ●                 | ●    | ●    |
|          | Bleach         | ●                 | ●    | ●    |
|          | IPA            | ●                 | ●    | ●    |
| Harsh    | Gasoline       | ●                 | ●    | ●    |
|          | Grease         | ●                 | ●    | ●    |
|          | Oil            | ●                 | ●    | ●    |
| Extreme  | Acetone        | ●                 | ●    | ●    |
|          | IR Reflow      | ●                 | ●    | ●    |
|          | MEK            | ●                 | ●    | ●    |
|          | TCE            | ●                 | ●    | ●    |
|          | Xylene         | ●                 | ●    | ●    |

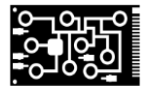
● Recommended ● Test in Your Application ● NR Not Recommended

## SUGGESTED APPLICATIONS

- UL/CSA compliance product labeling



- Top-side PCB labeling



- Product identification



- Automotive labeling



All products should be pre-tested to ensure it meets all intended requirements of specific end-use applications.

For more information, visit [www.zebra.com/supplies](http://www.zebra.com/supplies)

Product Performance and Suitability: The information contained in this document is to be used for guidance only and is not intended for use in setting specifications. All purchasers of





**ZEBRA**

# Z-Xtreme 4000T

## UL/CSA ACCEPTANCES

Z-Xtreme 4000T White and Silver with 5319, 5555, 3200, 5586, 5095 and 5100 ribbons is UL-recognized and CSA-accepted for indoor/outdoor use.

## FACESTOCK TENSILE STRENGTH

- Machine direction: 18,000 psi
- Transverse direction: 22,000 psi

All products should be pre-tested to ensure it meets all intended requirements of specific end-use applications.

For more information, visit [www.zebra.com/supplies](http://www.zebra.com/supplies)

Product Performance and Suitability: The information contained in this document is to be used for evidence only and is not intended for use in setting specifications. All purchases of

